

FREEHOLD



House - Semi-Detached (EPC Rating:)

WYVERN AVENUE, RUSHEY MEAD, LEICESTER, LE4 7HH

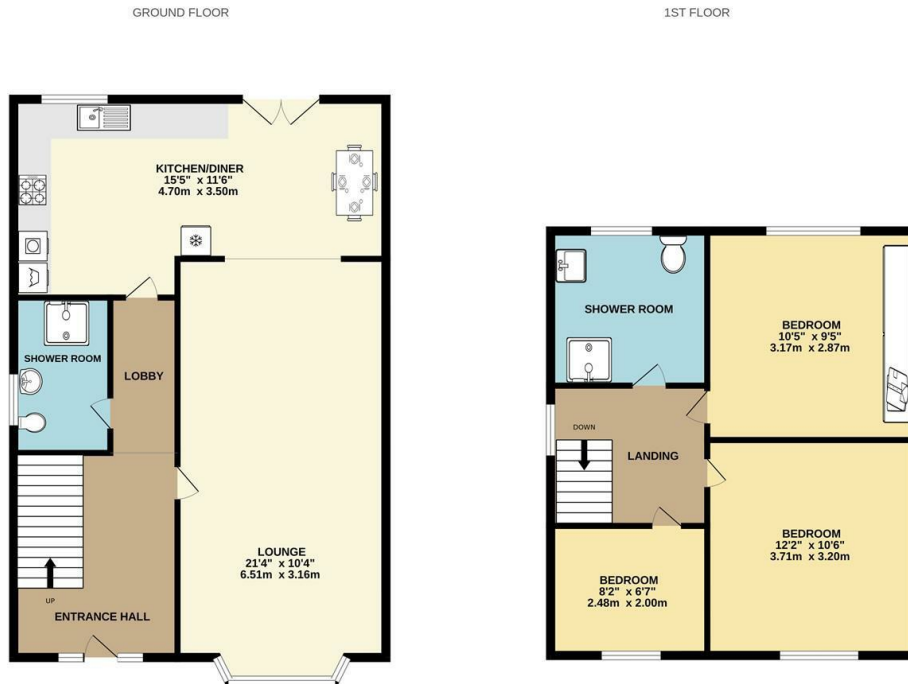
£320,000



3 Bedroom House - Semi-Detached located in Leicester

Seths are delighted to present you this well presented semi-detached home which is located in the popular Rushey Mead area of Leicester. The accommodation comprises of; a lounge, kitchen/diner, downstairs shower room, upstairs there are three bedrooms and a family bathroom. This property further benefits from a rear garden, double glazed windows, gas central heating and potential driveway space.

Viewing is by appointment only.

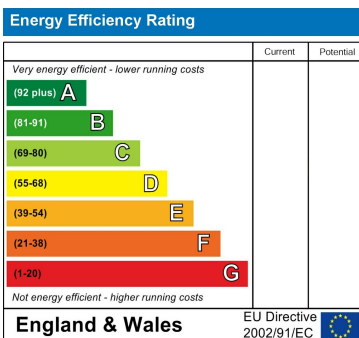


Whilst every attempt has been made to ensure the accuracy of the floorplan contained here, measurements of doors, windows, rooms and any other items are approximate and no responsibility is taken for any error, omission or mis-statement. This plan is for illustrative purposes only and should be used as such by any prospective purchaser. The services, systems and appliances shown have not been tested and no guarantee as to their operability or efficiency can be given.
Made with Metropix ©2022

Council Tax Band

B

Energy Performance Graph



Call us on

0116 266 9977

sales@seths.co.uk

www.seths.co.uk

Agents Note: Whilst every care has been taken to prepare these particulars, they are for guidance purposes only. All measurements are approximate and are for general guidance purposes only and whilst every care has been taken to ensure their accuracy, they should not be relied upon and potential buyers are advised to recheck the measurements.